

Mounting Accessories for Cylinders

Self-aligning articulated couplings



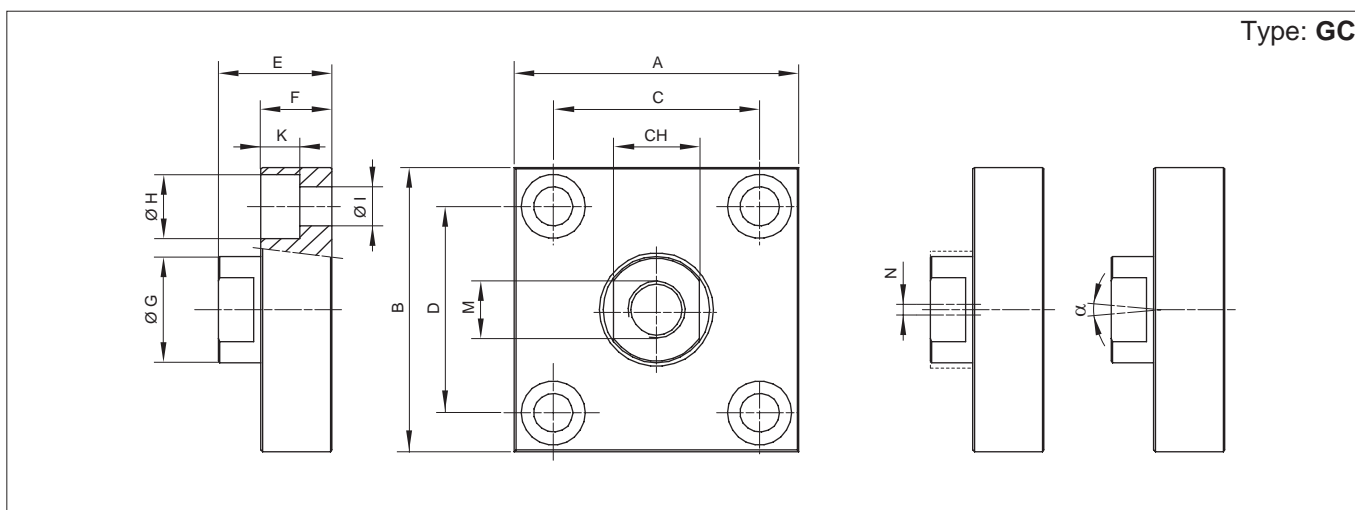
| Standard executions | | |
|------------------------------------|--------|-----------|
| Version | Symbol | Type |
| Self-aligned articulated couplings | | GC |



Axial self-aligning articulated couplings mounted on the cylinder rod. They are suitable for applications with high tractions and allow to compensate the angular and parallel misalignments.

| Options | Suffix |
|-----------------------------|------------|
| Special versions on request | / S |

| Technical data | |
|----------------|-------------------|
| Material | Zinc plated steel |



| Code | Item | A | B | C | D | CH | E | F | Ø G | Ø H | Ø I | K | M | N | α | Weight (g) |
|--------|------------|-----|-----|----------|----------|----|----|----|-----|-----|-----|----|----------|---|----------|------------|
| 041722 | GCM10x1,25 | 60 | 37 | 36 ±0,15 | 23 ±0,15 | 17 | 24 | 15 | 20 | 11 | 6,6 | 7 | M10x1,25 | 2 | 0,4÷0,8 | 0,3 |
| 041723 | GCM12x1,25 | 60 | 56 | 42 ±0,2 | 38 ±0,2 | 19 | 30 | 20 | 25 | 15 | 9 | 9 | M12x1,25 | 2 | 0,4÷0,8 | 0,4 |
| 041724 | GCM16x1,5 | 80 | 80 | 58 ±0,2 | 58 ±0,2 | 24 | 32 | 20 | 30 | 18 | 11 | 11 | M16x1,5 | 2 | 0,4÷0,8 | 0,9 |
| 041725 | GCM20x1,5 | 90 | 90 | 65 ±0,2 | 65 ±0,2 | 36 | 35 | 20 | 40 | 20 | 14 | 13 | M20x1,5 | 2 | 0,4÷0,8 | 1,1 |
| 041726 | GCM27x2 | 90 | 90 | 65 ±0,2 | 65 ±0,2 | 36 | 35 | 20 | 40 | 20 | 14 | 13 | M27x2 | 2 | 0,4÷0,8 | 1,1 |
| 041727 | GCM36x2 | 125 | 125 | 90 ±0,2 | 90 ±0,2 | 50 | 55 | 30 | 60 | 26 | 18 | 17 | M36x2 | 3 | 0,4÷0,95 | 3,4 |