

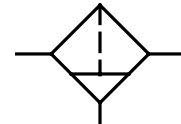
Filter G 3/4 , G 1

item	type	F.54	F.55
port size		G 3/4	G 1
description			
		centrifugal force principle with sintered filter	
mounting			
		vertically, drain plug at bottom	
media			
		compressed air, neutral gases	
supply pressure			
		Pe max. 16 bar	
		Pe min. 1,5 bar with auto drain	
		Pe max. 20 bar with metal bowl	
filter element			
		40 µm standard, 8 µm (absolutely)	
media and ambient temperature			
		max. 60°C	
		(oth. temperature ranges available upon request)	
bowl volume			
		max. 125 cm ³ condensation volume	
drain model			
		manuell standard	
fixing			
		install in pipe line, bracket	
weight			
		1,650 kg	



replacement parts

no	description		material	order-no.
1	body		Al	---
2	distance	F.55-4	Al	8.1355.04.000
3	filter element	C.55-28	cellpor	5.2155.28.000
4	O-ring 81 x 2	C.55-23	NBR	1.2155.23.000
5	twist plate	C.55-25	POM	3.2155.25.000
6	baffle plate	C.33-31	PA	3.2133.31.000
7	O-ring 50 x 2	C.33-23	NBR	1.2133.23.000
8	bowl	C.33 man	polycarbonate	8.2133.76.000



series 5

ordering information

F. ** *
 type
 port size option

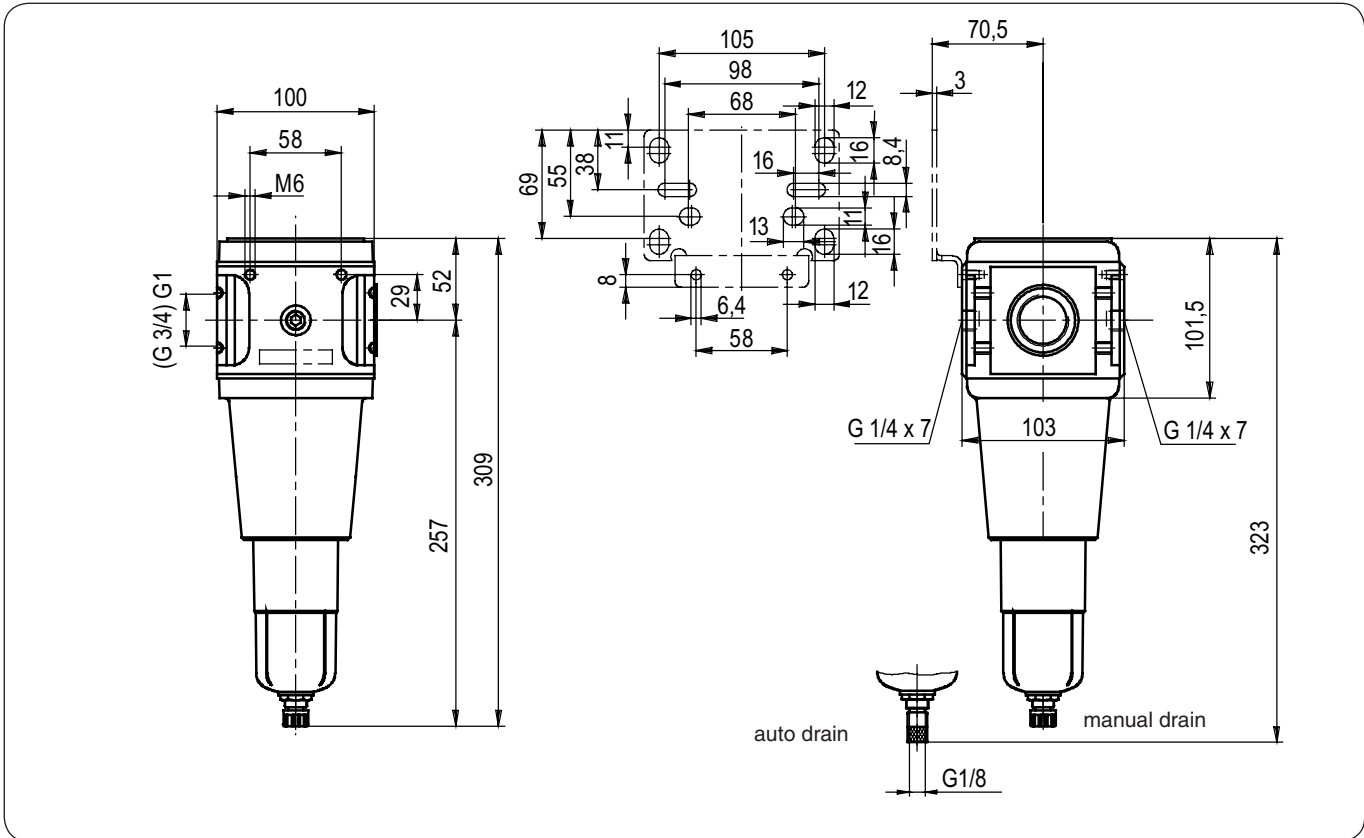
ordering example: F.55 B AM

		port size	
1	54	G 3/4	
	55	G 1	
		options	
2	G	differential gauge DM.1	
	B	bowl guard	
	H	metal bowl with sight glass	
	HA	semi drain	
	AM	auto drain	

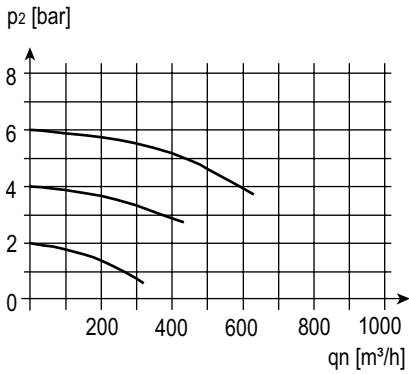
application information

- easy block assembly for components to be connected in series
- interlocking of several individual devices requires coupling kit(s) KP.55
- interlocking of several individual devices, with narrow distributor Z.5- or ball valve K.55 requires coupling kit(s) KP.55 Z
- filter transmittance according to ISO 4003, glass bead test
- field installation of bowl guard without tools

dimensions (mm)

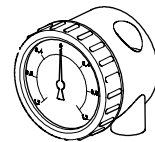


flow characteristics



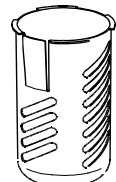
accessories

differential gauge



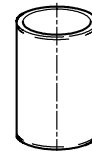
type: DM.1

bowl guard



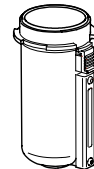
type: C.33-45

filter-element



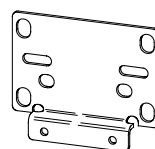
type:
8µm: C.55-26

metall bowl with sight glass



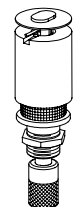
type: C.33 H

mounting bracket



type: ZW.55

auto drain



type: AM 10